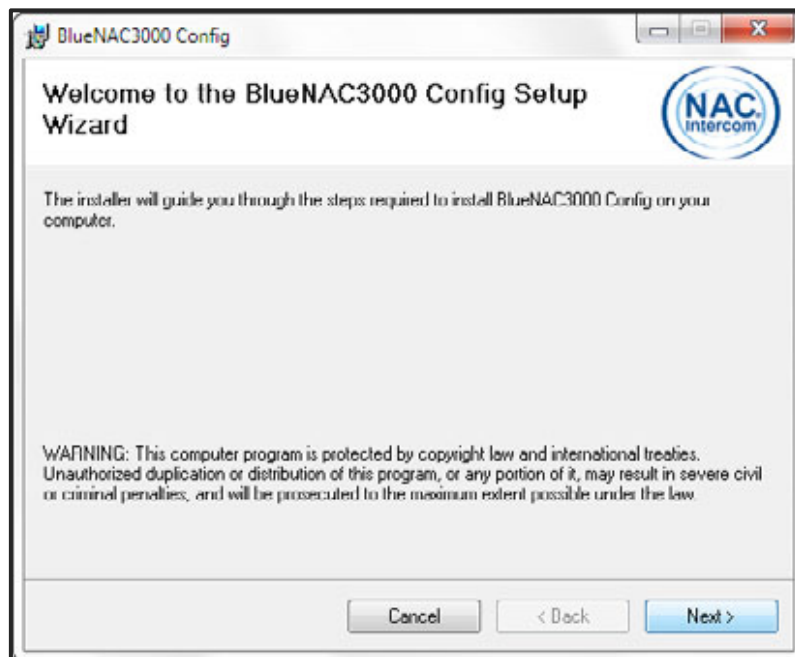


# Steps to install BlueNAC-3000® Configuration Software

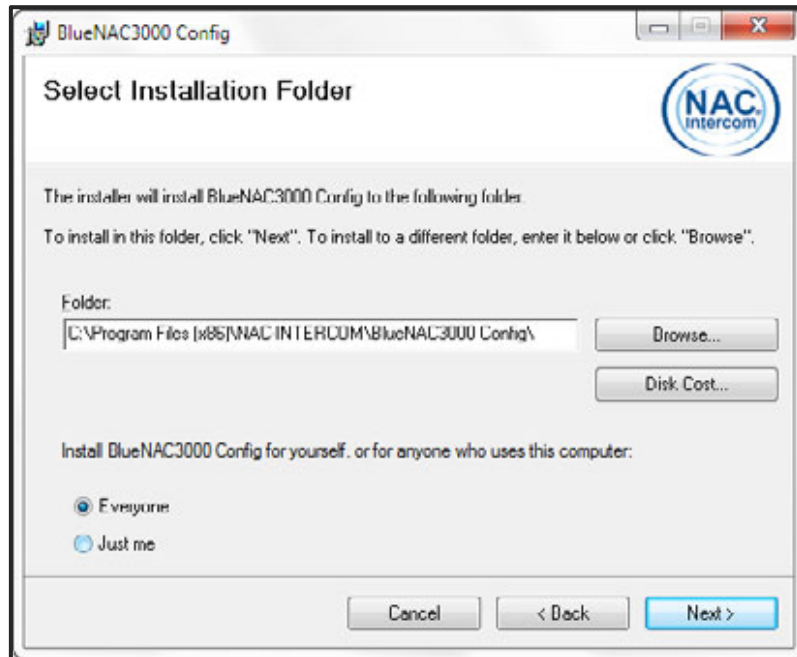
**STEP 1.-** Download from the website <http://www.bluenac3000.es> the BlueNAC-3000® config program and run on your computer (this program is valid for the Intercom Moto, RadioLink Module and Aviation Headset).



**STEP 2.-** The first window of the program informs the program to install and its copyright.

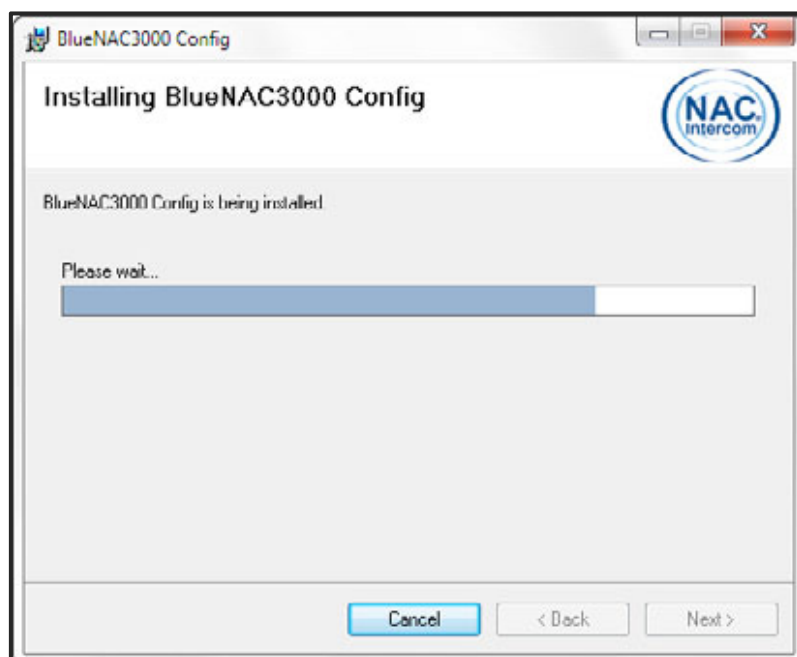


**STEP 3.-** In the next window you will select the route installation of software on your computer and which users have access to it. It is very important to remember this route, because it will be necessary to search for device drivers. It is recommended not to change the default address: [C:\Program Files\NAC-INTERCOM\BlueNAC3000 Config](#)

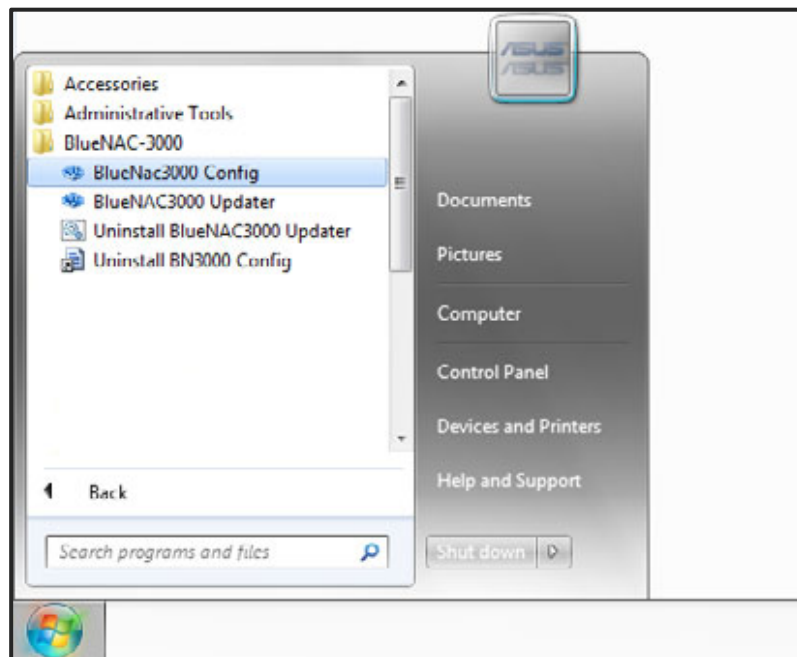
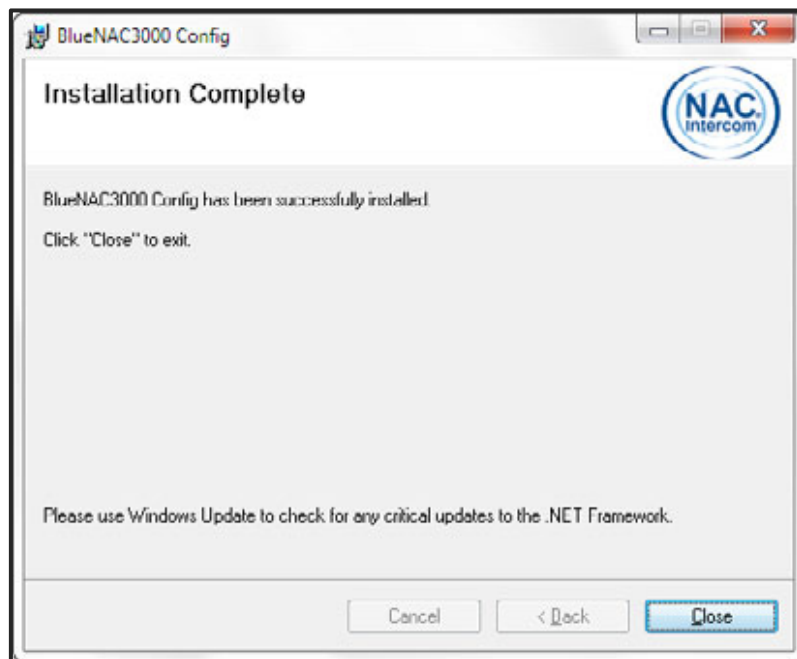


**STEP 4.-** The adjustments are complete, so installer asks us for confirmation to proceed.

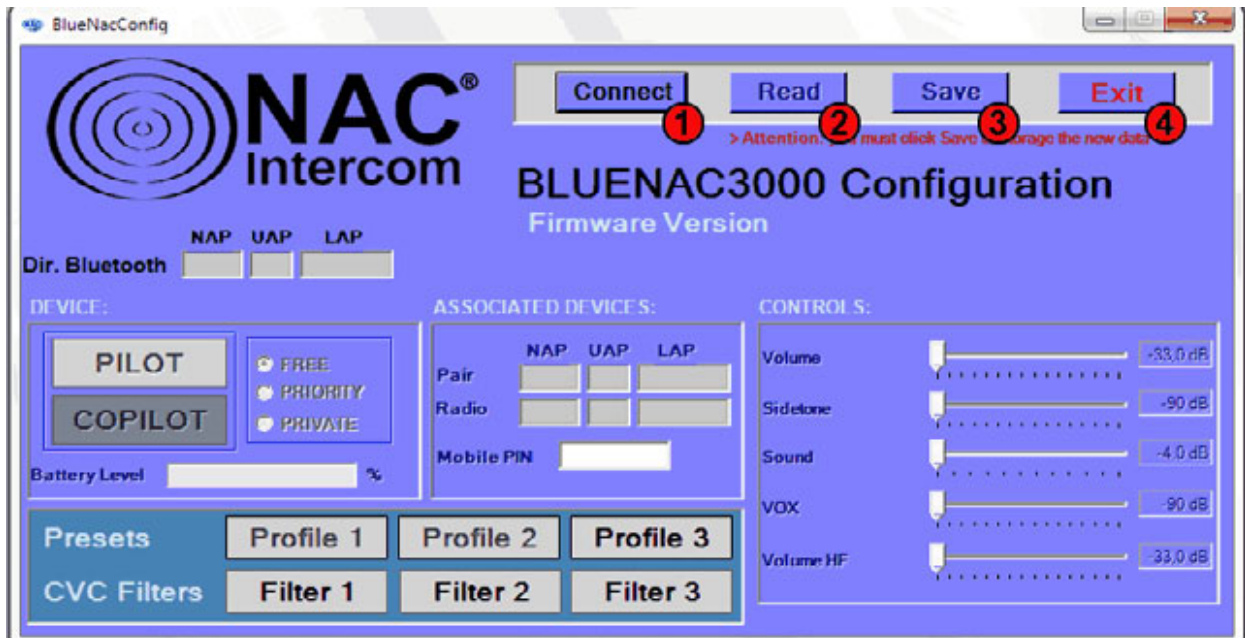
**STEP 5.-** The progress bar shows the installation on our computer. No need to press any button and we await the end.



**STEP 6.-** Once installed correctly, we receive the following confirmation window, we simply closed by clicking the appropriate button. To access the program The configuration software installs a shortcut on the Windows Start menu under the path " Programs-> BlueNAC-3000-> BlueNac3000 Config"



# BlueNAC-3000® Configurator Software User Guide



**[i] IMPORTANT:** To use the BlueNAC-3000® Configuration Software, you must first install the device drivers (downloadable from <http://www.bluenac3000.es>) and the device must be switched off and connected by USB to your computer.

To start the application you must press the **Connect button (1)** of the button table on top. This connects the configurator to his unit, and allows you to change the settings for your BlueNAC-3000® device.

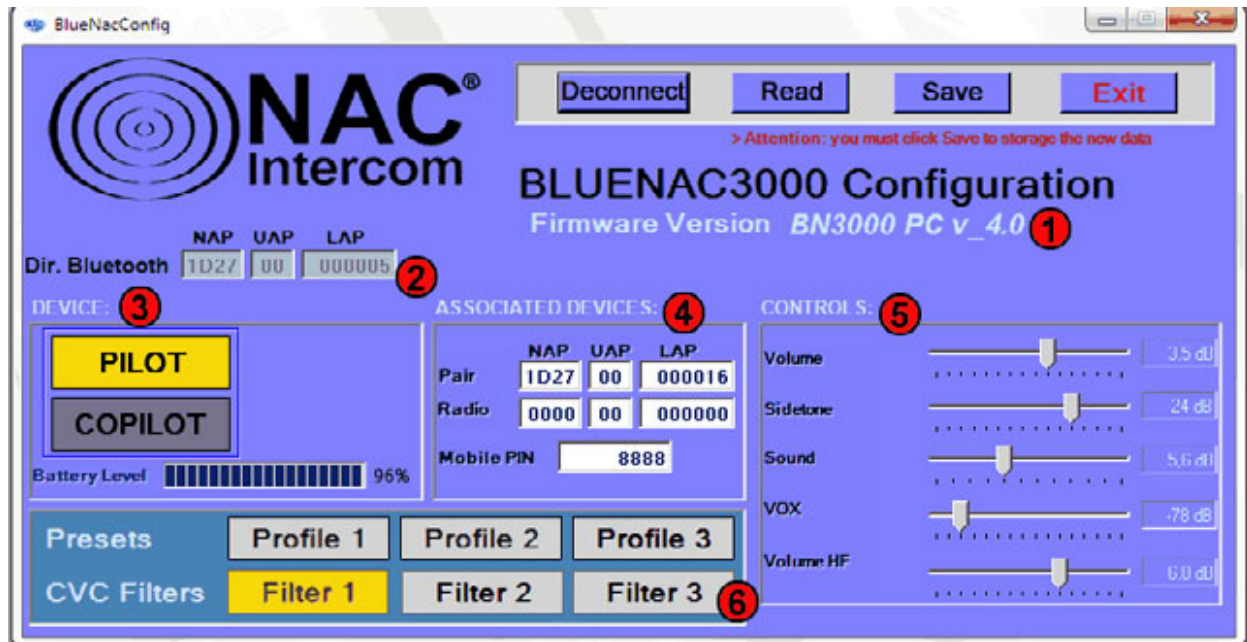
## Reference:

**(1) Connect.-** Connect your BlueNAC-3000® device with the software to interpret the data stored. You need to connect only in the start of the program.

**(2) Read.-** Read the settings stored in the BlueNAC-3000® device.

**(3) Save.-** Write the modified data on the device. It is necessary to save so all your changes are stored in the memory of BlueNAC-3000®.

**(4) Exit.-** Close the software. Remember to save changes before exiting the device, since otherwise the changes will not be stored in the BlueNAC-3000®.



Once connected, the configuration software shows the values stored in your BlueNAC-3000® and allows you to configure communication settings, volume ... as desired.

- (1) **Firmware.**- It shows, for information, the firmware version of your BlueNAC-3000®.
- (2) **Bluetooth® Address.**- The unique address of your Bluetooth® device. For obvious reasons, this information is only informative and can't be changed.
- (3) **Device.**- In BlueNAC-3000® Aviation Headset and Intercom Moto is possible to change the Pilot to Copilot and vice versa, simply by pressing the preferred option. In RadioLink Module simply reflect their status "Radio" and shows the mode of transmission of the radio:
  - Free: Pilot and copilot can receive and transmit radio communications.
  - Priority: The pilot can receive and transmit radio but the copilot can only hear the transmission.
  - Private: Private mode of communication for the pilot. Excludes copilot reception and transmission.

Also, shows the battery of your BlueNAC-3000®.

- (4) **Paired Devices.**- Displays the paired modules Bluetooth® addresses of your BlueNAC-3000®, in case there were any. It also includes a field to edit the PIN code that is used to connect the unit to the mobile phone via Bluetooth®.
- (5) **Controls.**- Setting BlueNAC-3000® volume values in decibels. These volume controls may change depending on type of connected device.
  - **Intercom Moto/Aviation Headset**
    - a) Volume: The overall volume level of your device.
    - b) Sidetone: Adjusts the Sidetone volume level or "monitoring" (the volume that we hear our own voice).
    - c) Sound: Adjusts the volume of voices and sound-guide navigation menu.
    - d) VOX: Controls the volume needed to activate the VOX (voice operated transmission). Low levels are used in noise-free environments, and require little voice volume to activate. The more you raise this value, the more volume is needed to activate the VOX. This is useful in noisy environments

to not activate the sound transmission due to the annoying noise.

- e) Volume HF: Volume of mobile phones, GPS ... associated with BlueNAC-3000® via Bluetooth®.

- **RadioLink Module**

- a) Sound: Adjusts the volume of voices and sound-guide navigation menu.
- b) Auxiliary Volume: The volume level of auxiliary input audio (MP3, phone, ...)
- c) Radio Microphone Gain: Adjust the microphone gain level of the radio.
- d) Radio Volume: Adjust the volume level of the radio.

**(6) Presets & Filters.**- Allows to apply up to three volume profiles and CVC Filters (filters for Clear Voice Capture acoustic noise cancellation algorithm). Test and choose the best for your device. Remember to click on the “Save” button to save the changes.