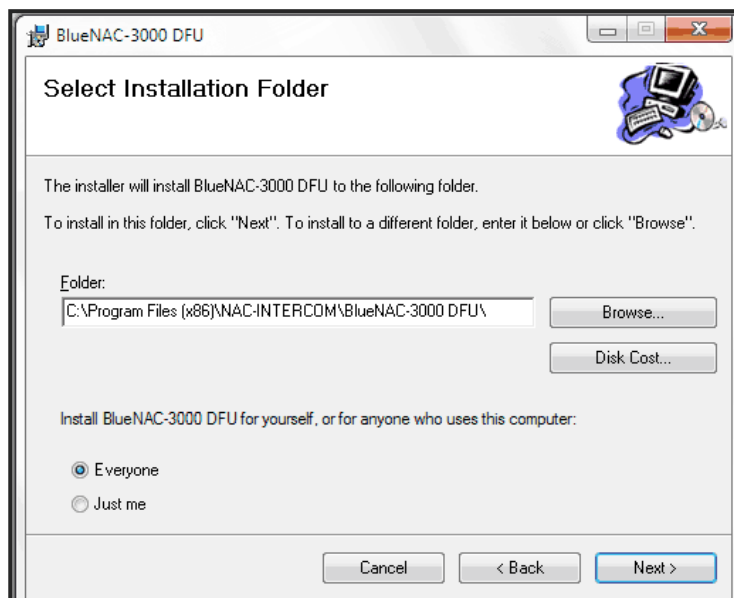


CHAP I: Install BlueNAC-3000® DFU

STEP 1.- Download and run the BlueNAC-3000® firmware upload software (DFU) from <http://www.bluenac3000.es> website (suitable for all BlueNAC-3000 devices).

STEP 2.- First window is only presentation. Press Next.

STEP 3.- Choose installation path (default C:\Program Files\NAC-INTERCOM\BlueNAC-3000 DFU) and single/multi user option. Press Next.



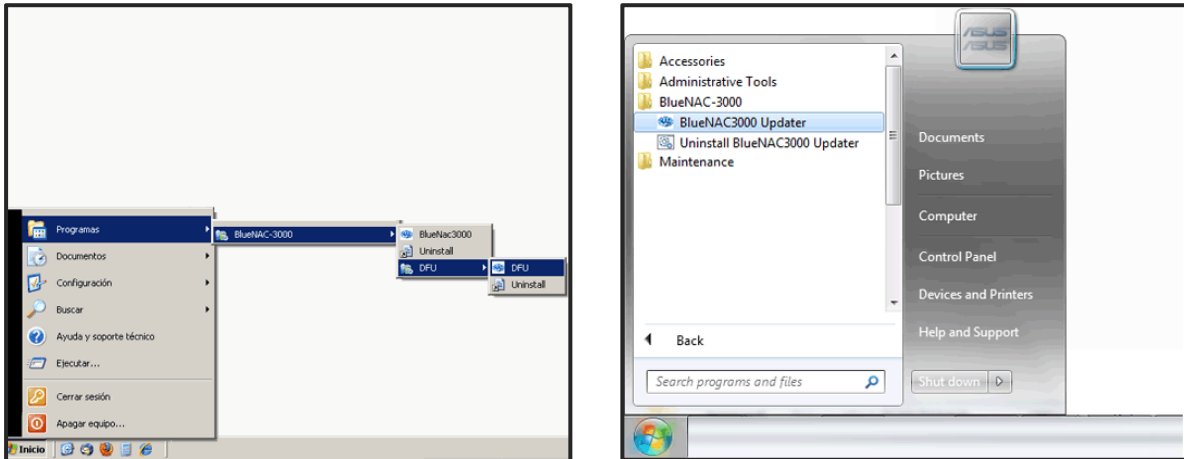
STEP 4.- The software is ready to install, press “Next” to start.

STEP 5.- Installation process start. This operation may take a few minutes.

STEP 6.- Last window informs you if the software has finished correctly. The program can be closed now.

CHAP II: Upgrade BlueNAC-3000® Firmware

STEP 1.- To start the application, in the task bar go to “Start> Programs> BlueNAC-3000> BlueNAC-3000 Updater”.

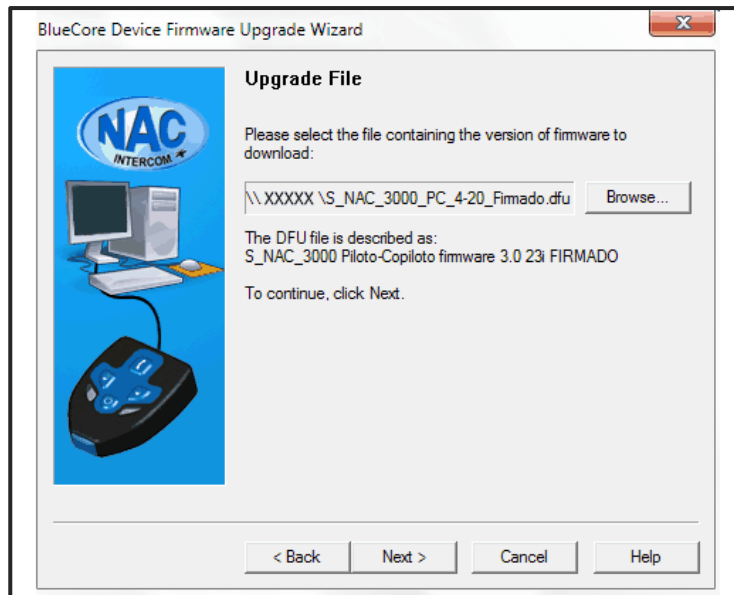


STEP 2.- First window inform only about the program version and Copyright.

STEP 3.- The DFU software searches the device by USB. Remember having connected by USB, with the drivers previously (<http://www.bluenac.es>) and close any NAC-Intercom software related to BlueNAC-3000® (driver installer, configuration software...).

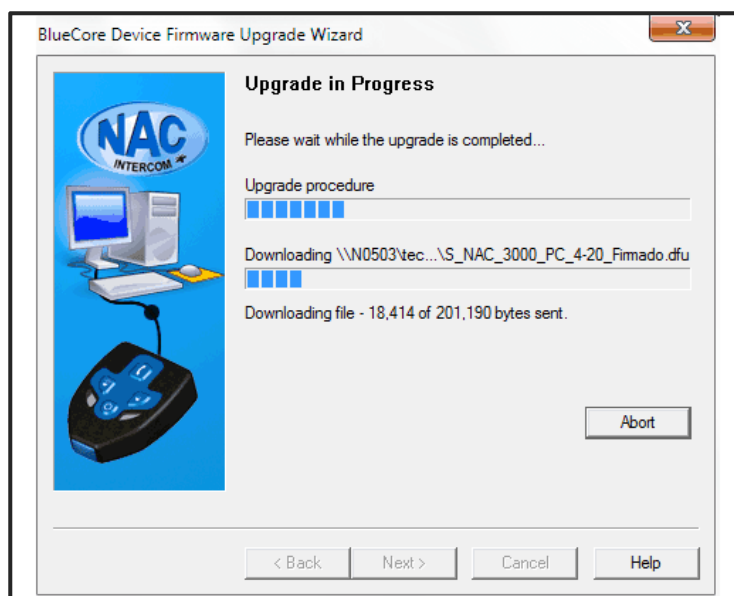


STEP 4.- The next window is for the firmware file (.dfu) selection. You could find it in the download section in our Web <http://www.bluenac.es>.



STEP 5.- Summary of data collected in previous steps. If any step is incorrect you must go back to correct it.

STEP 6.- The program communicates with the device via USB. Remember do not disconnect the USB cable to update successfully



STEP 7.- Depending on your Windows version, at this point might recognize the device as new and ask you to install the drivers . This is perfectly normal; in the next steps we show you how to install it. If this new hardware message don't show up follow to Step 13.

STEP 8.- Windows pop-up the Add Hardware Wizard. In this window choose “No, not this time” and press “Next”.



STEP 9.- The Wizard will ask you for drivers location. Choose “Install the software automatically (Recommended).”

STEP 10.- Windows alerts the drivers not pass the Windows Logo Testing. It's a precaution standard alert, so press “Continue Anyway”.

